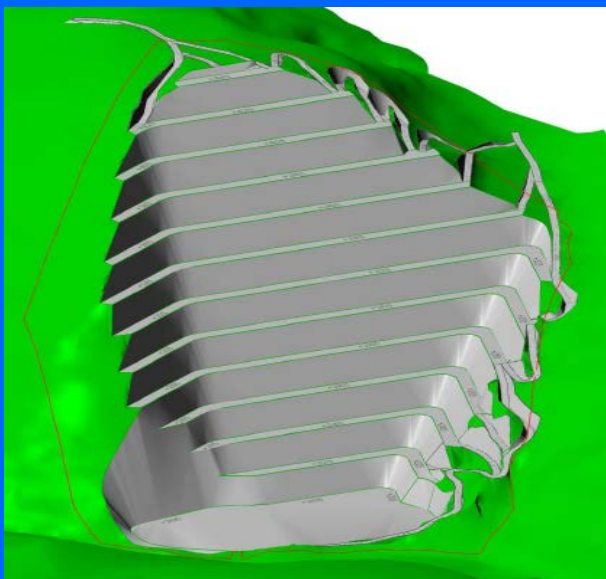
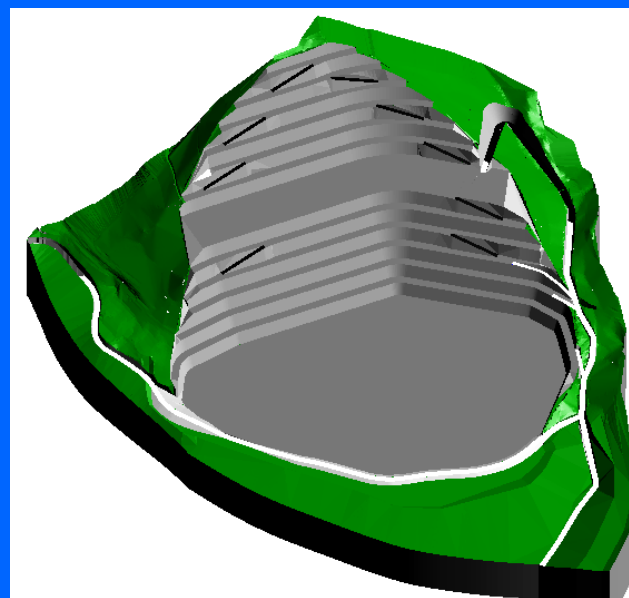


## 5.2.7.1. KREIRANJE 3D MODELA ZA PREZENTACIJU POVRŠINSKIH I PODZEMNIH KOPOVA



model tehnički oblikovanog kopa t-gk Pregrada II



model tehnički oblikovanog kopa t-gk Gorjak



model prenamjene kopa t-gk Pregrada II

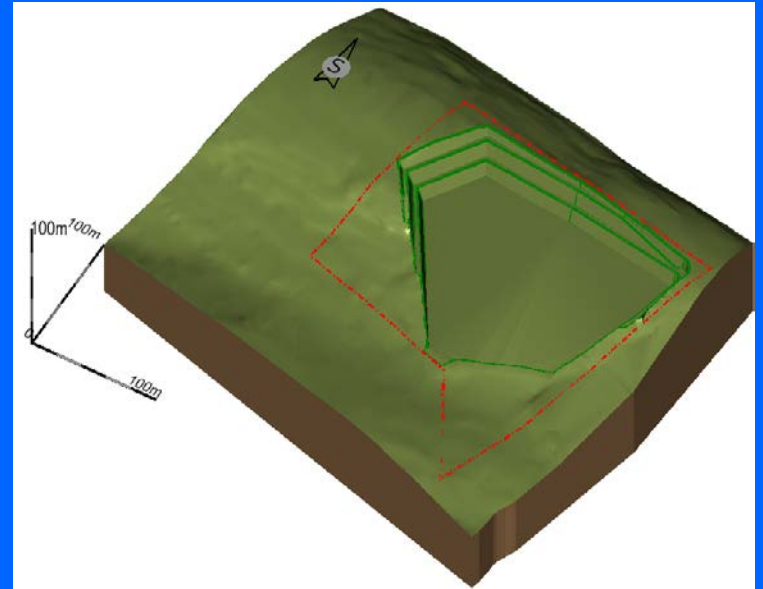


model prenamjene kopa t-gk Močići

Slika 5.2.79



model tehnički oblikovanog kopa t-gk Ivanec Zaprešić



model tehnički oblikovanog kopa t-gk Močići

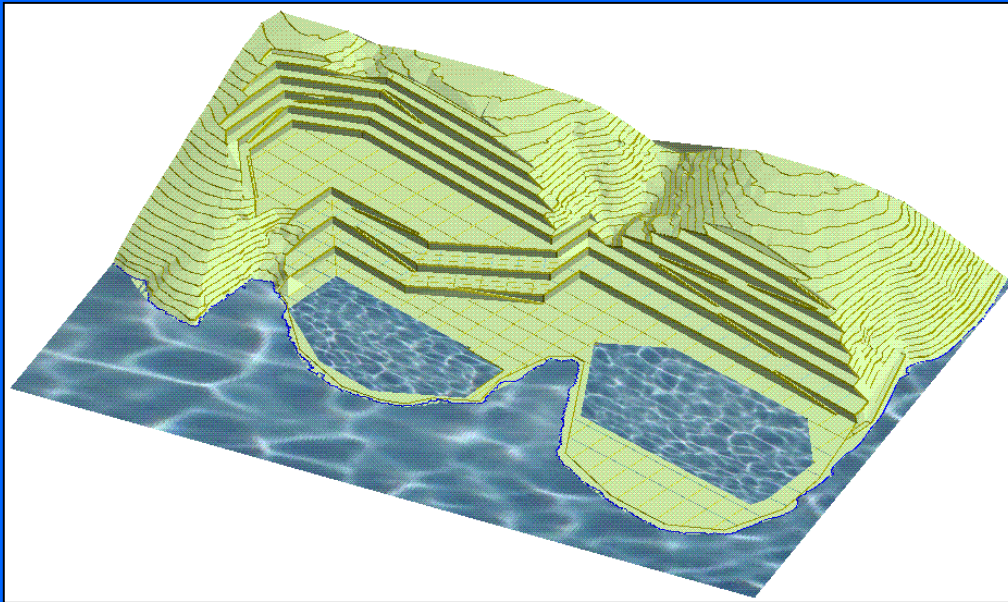


model prenamjene kopa t-gk Ivanec Zaprešić

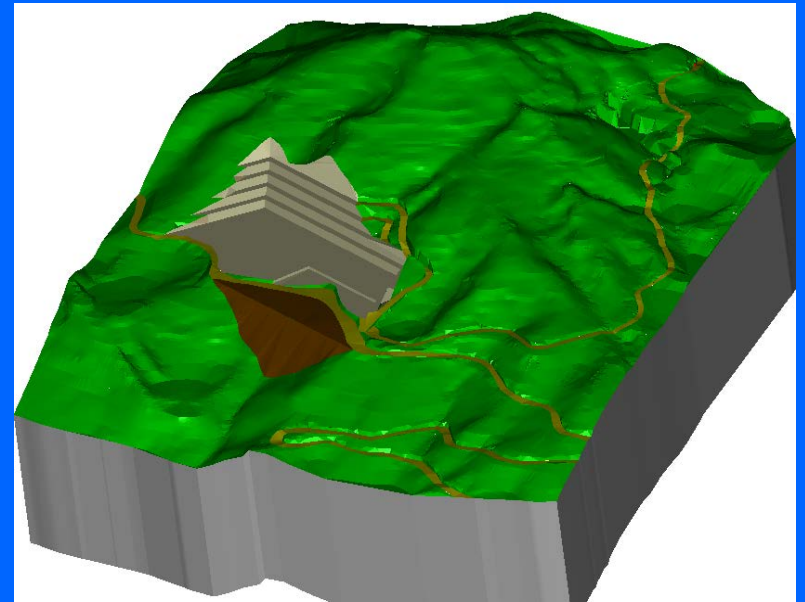


model prenamjene kopa t-gk Močići

# Grafički i računalni modeli



model tehnički oblikovanog kopa a-gk Pučišća



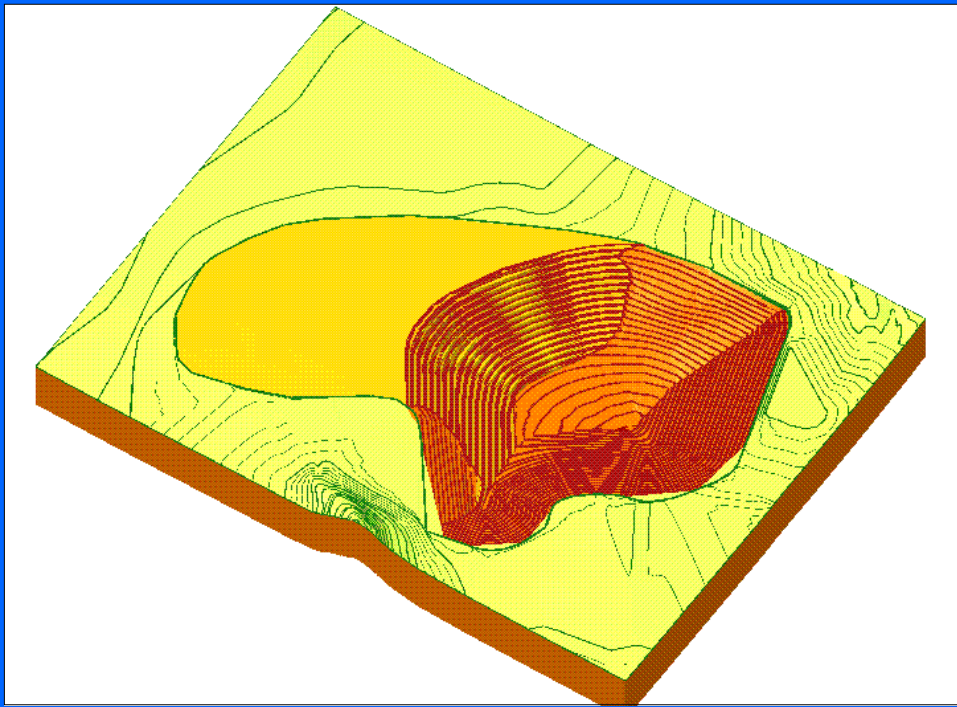
model tehnički oblikovanog kopa a-gk San



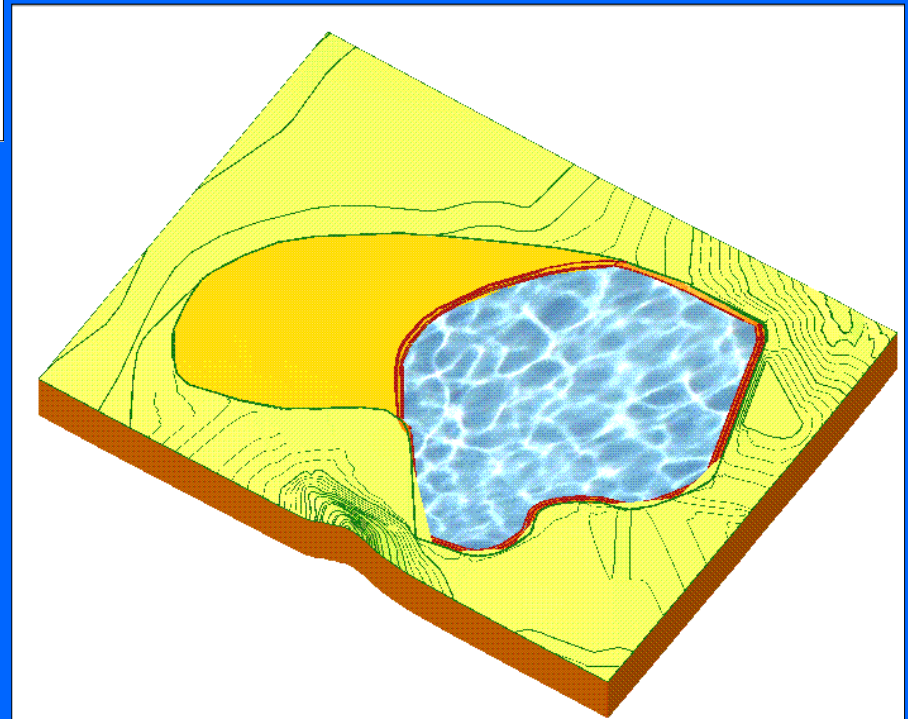
model tehnički oblikovanog kopa boksita Skakavac



model tehnički oblikovanog kopa t-gk Gola Glava

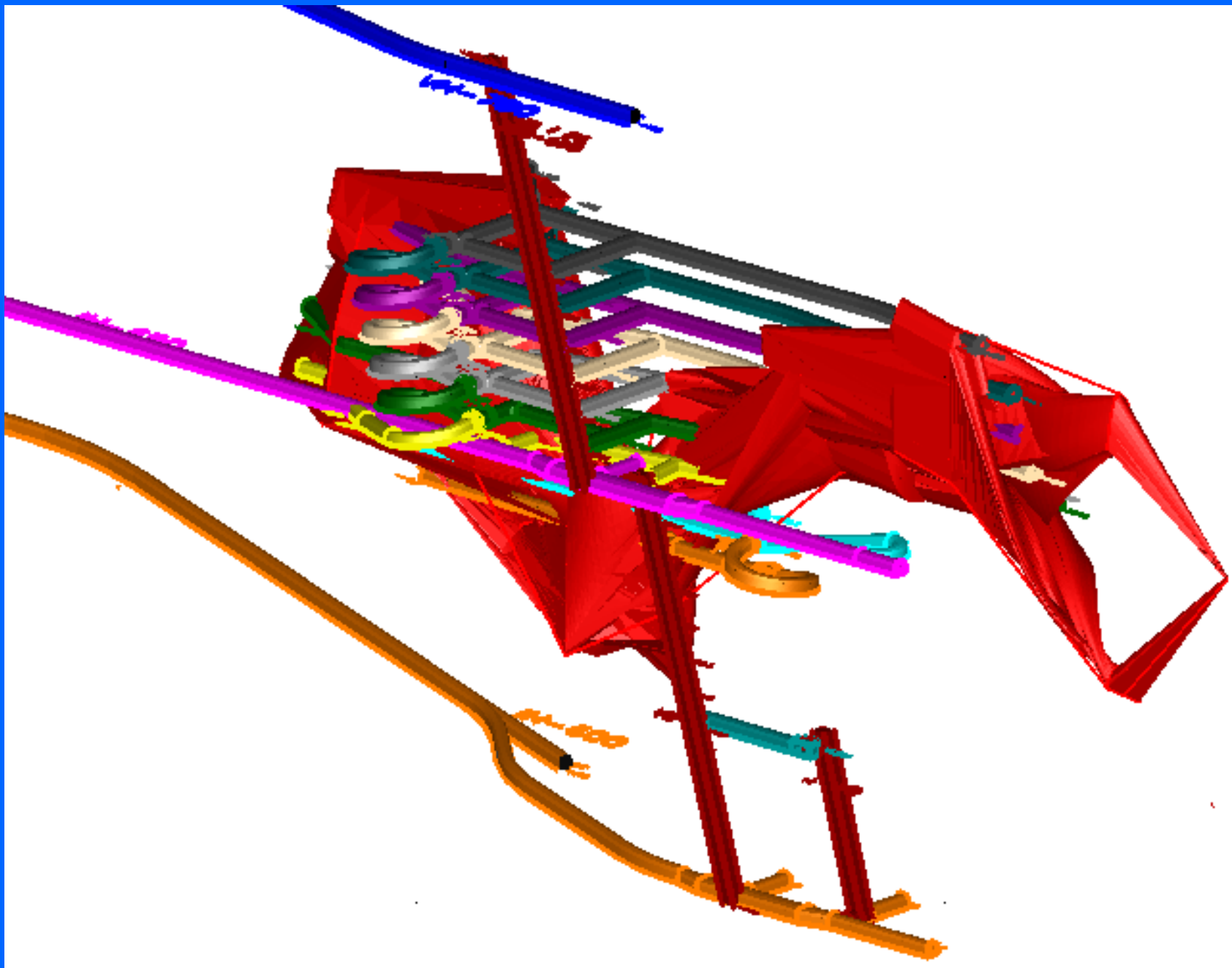


model tehnički oblikovanog kopa ugljena Kongora

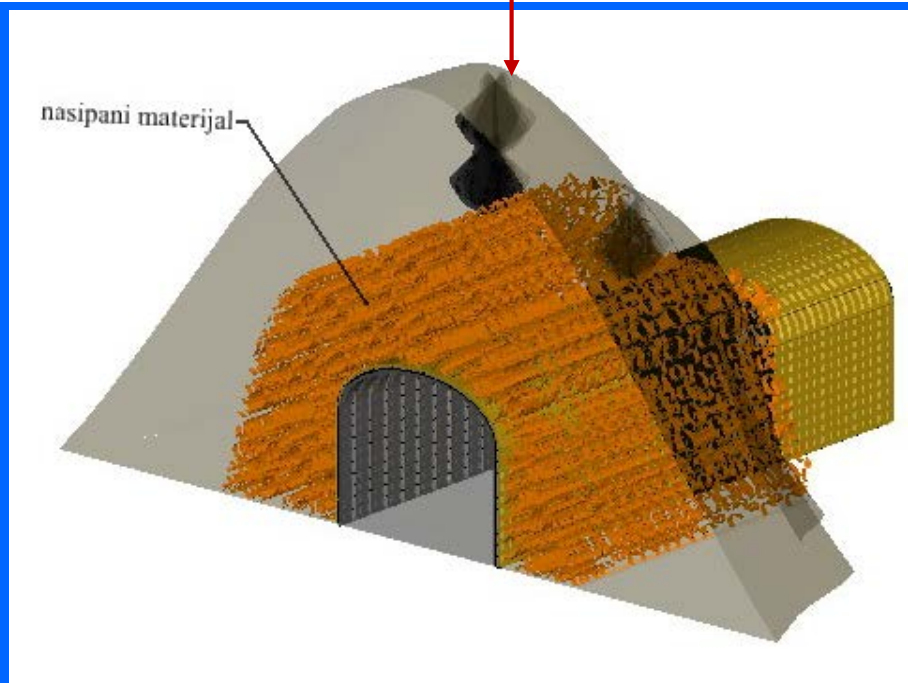
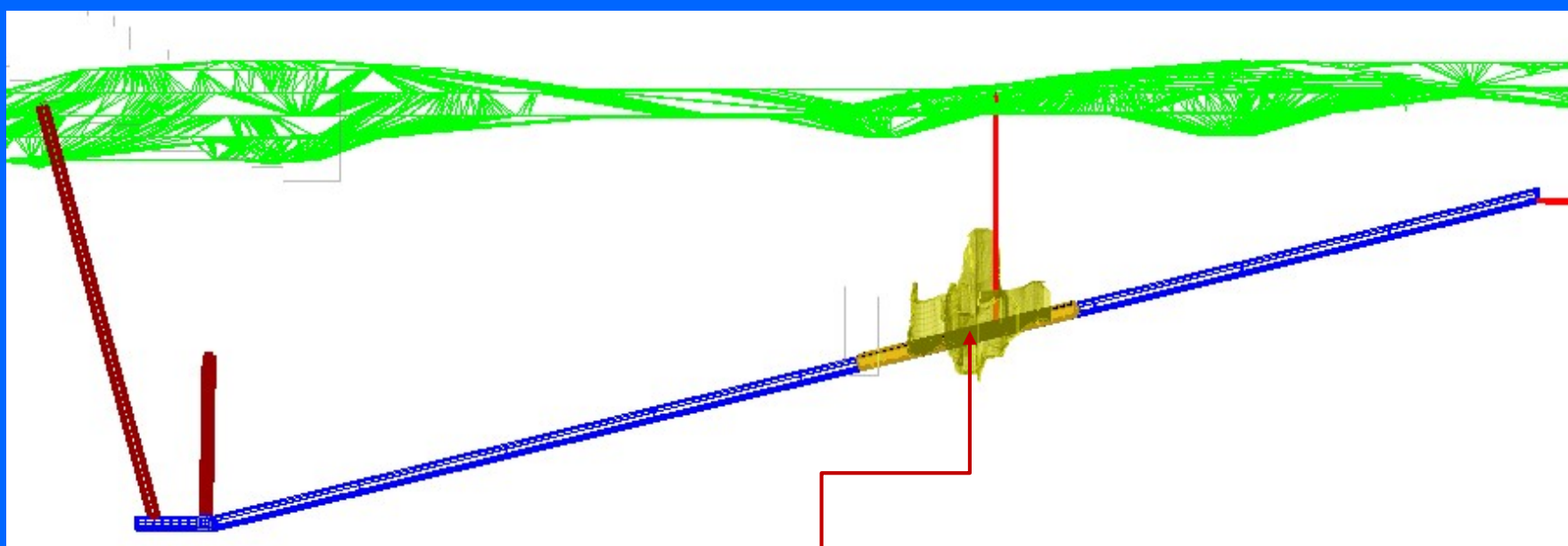


model prenamjene oblikovanog kopa ugljena Kongora

Slika 5.2.82



Slika 5.2.83 Model razrađenog kopa boksita L-25 na Bešpelju

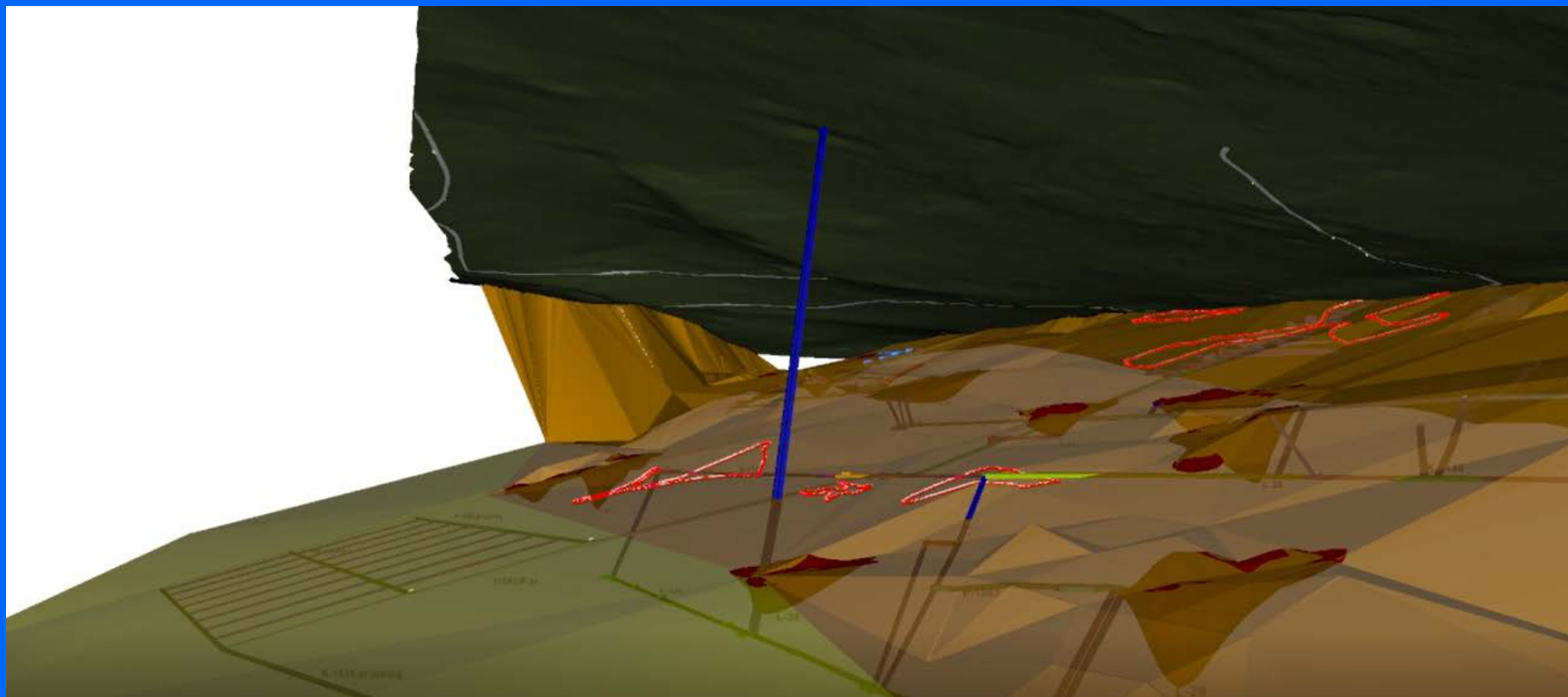


Slika 5.2.84 Model sanacije niskopa zbog pojave kaverne na ležištu L-34 na Bešpelju



Slika 5.2.85 model ulaza u potkop na boksitososnom području Poljane (dipl. rad Mihaljević, M.)





Slika 5.2.86 Model podzemnih prostorija i istraživanja na boksitosnom području Poljane  
(dipl. rad Mihaljević, M.)